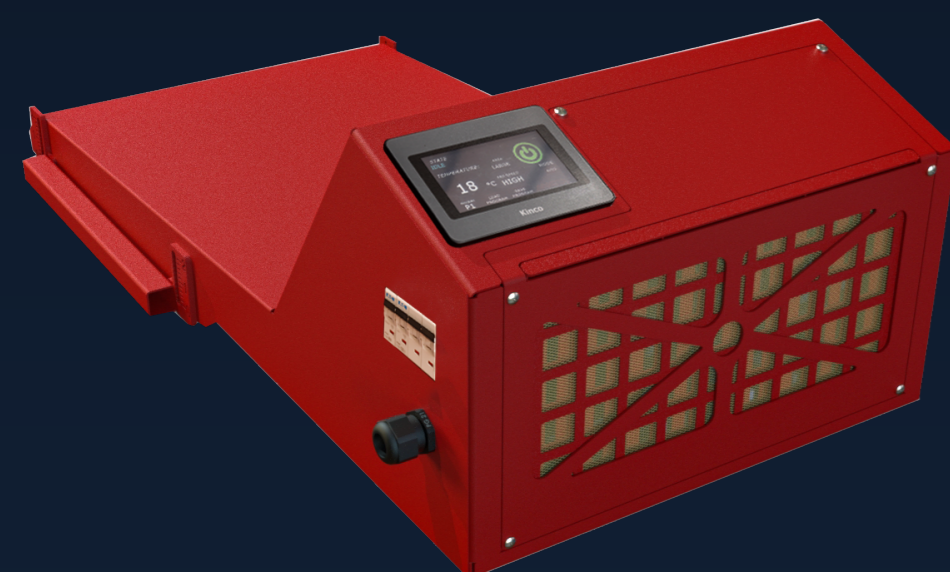



# COMET PRIME



 Take maximum control over your flash settings to effectively cure even the most sensitive garments

- Quartz flash with air circulation and temperature sensor, designed for curing delicate, heat-sensitive garments like nylon
- Precise control over curing intensity, temperature, air circulation and active heating zones, right from the touchscreen of your Anatol automatic press
- Uniform air circulation cures many types of ink quickly and efficiently and prevents garments from scorching
- Quartz lamps have a fast warm-up time and activate automatically only as needed, reducing energy consumption
- Mounts easily in the print head of your Anatol automatic press; also available on a height-adjustable floor stand for use with a manual press

SIZE	NUMBER OF CURING ZONES	NUMBER OF LAMPS	ELECTRICAL REQUIREMENTS*
16" x 18" (40.6cm x 45.7cm)	3	12	1Ph, 208-240V, 50/60Hz, 12kW, 57A 3Ph, 208-240V, 50/60Hz, 12kW, 33A
20" x 28" (50.8cm x 71.1cm)	3	18	1Ph - special order only 3Ph, 208-240V, 50/60Hz, 22.5kW, 63A

\*The maximum power consumption is calculated for all lamps operating at maximum power

# FLASH CURE UNITS

## Quartz and Infrared Flashes for Manual and Automatic Presses

### Maximum Control and Reliability

- Quartz flashes with sensors allow you to set and maintain a desired curing temperature
- Control your flash right from the touchscreen of your Anatol automatic press
- Long-lasting quartz bulbs or infrared panels ensure consistent heating


### Versatile Curing Solutions

- Flash cure units available with floor stands for use with manual presses
- Easily mount flash cures on your Anatol automatic press the same way you load a screen
- Models available with curing areas up to 30" x 40"



# RAPID WAVE

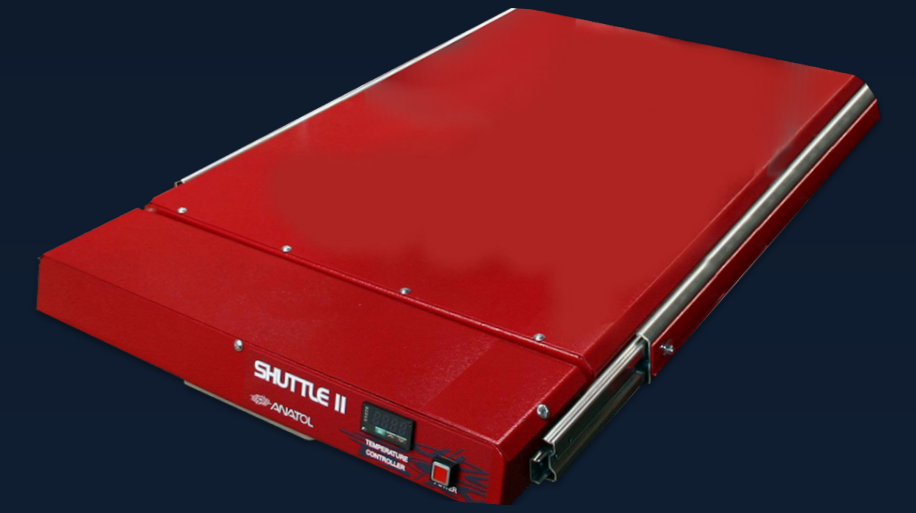


 **Fast flash curing saves energy and keeps production high**

- Medium wave quartz lamps heat up and shut down quickly, saving electricity
- Three curing zones can be controlled independently or in combination
- Built-in temperature sensor allows you to set a precise curing temperature from the touchscreen of your Anatol automatic press
- Horizontally-arranged bulbs allow for more bulbs than competing flashes, ensuring thorough curing and precise control over intensity

MODEL	SIZE	SINGLE PHASE ELECTRICAL REQUIREMENTS	THREE PHASE ELECTRICAL REQUIREMENTS
RWQF-1616	16" x 16" 41cm x 41cm	43 AMPS	25 AMPS
RWQF-1618	16" x 18" 41cm x 46cm	57 AMPS	33 AMPS
RWQF-2021	20" x 21" 51cm x 54cm	85 AMPS	49 AMPS
RWQF-2028	20" x 28" 51cm x 71cm	N/A	63 AMPS
RWQF-3040	30" x 40" 71cm x 102cm	N/A	98 AMPS

# INFRARED SHUTTLE




 **Consistent heating in an affordable package**

- Radiant infrared panels ensure consistent heating throughout the production run
- Mount in the print head of your Anatol automatic press or on a height-adjustable floor stand for use with a manual or non-Anatol automatic press
- Easy-to-use digital intensity controls
- Head-mounted units use the print stroke movement to cure prints of all sizes

MODEL	SIZE	SINGLE PHASE ELECTRICAL REQUIREMENTS	THREE PHASE ELECTRICAL REQUIREMENTS
INFSHU-16x16	16" x 16" 41cm x 41cm	208V 14 AMPS, 2,740 W	N/A
INFSHU-18x20	18" x 20" 46cm x 51cm	208V 20 AMPS, 4,000 W	N/A

# PILOT FLASH



 **Cure your largest prints with high speed and energy efficiency**

- Travels back and forth over the printed image so you can cure oversized prints with a compact flash cure unit
- Quartz lamps provide a high concentration and even distribution of energy for fast, thorough curing
- Compact, mobile design saves energy compared to a traditional stationary flash
- Compatible with Anatol Volt, Vector and Titan automatic screen printing presses and controllable directly from the press's touchscreen
- Available with 20", 30" and 40" wide curing areas, so you can cure even jumbo prints quickly and efficiently

CURING AREA WIDTH	NUMBER OF CURING ZONES	NUMBER OF LAMPS	ELECTRICAL REQUIREMENTS*	
20" (50.8cm)	1	4	1Ph, 208-240V, 50/60Hz, 4kW, 19A	3Ph, 208-240V, 50/60Hz, 4kW, 11A
30" (76.2cm)	1	8	1Ph, 208-240V, 50/60Hz 8kW, 38A	3Ph, 208-240V, 50/60Hz, 8kW, 22A
40" (101.6cm)	1	8	1Ph, 208-240V, 50/60Hz, 10kW, 46A	3Ph, 208-240V, 50/60Hz, 10kW, 28A

\*The maximum power consumption is calculated for all lamps operating at maximum power

# INFRARED PANEL

 **Perfect for startup screen printing shops**

- Ideal flash cure to pair with a manual screen printing press – affordable and simple to operate
- Powerful infrared panel for reliable, consistent curing
- Heavy-duty rotating steel floor stand for easy setup and mobility



MODEL	SIZE	SINGLE PHASE ELECTRICAL REQUIREMENTS	THREE PHASE ELECTRICAL REQUIREMENTS
INFPAN-16x16	16" x 16" 41cm x 41cm	14 AMPS	N/A
INFPAN-18x20	18" x 20" 46cm x 51cm	20 AMPS	N/A