

VULCAN SERIES GAS CONVEYOR DRYERS

| MODEL | BELT WIDTH | HEAT CHAMBER | OVERALL LENGTH | STANDARD INFEED/OUTFEED LENGTH | ELECTRICAL REQUIREMENTS | MAXIMUM BURNER CAPACITY |
|------------|------------|--------------|----------------|--------------------------------|--|-------------------------|
| VUL-36-06 | 36" | 6'0" | 14'0" | 8'0" | 1 Phase, 208-230V, 3.57 kW, 18A, 50/60 Hz 3 Phase, 208-230V, 3.57 kW, 10A, 50/60 Hz | 280,000 BTU |
| VUL-36-8.5 | 36" | 8'6" | 16'6" | | | |
| VUL-36-10 | 36" | 10'0" | 18'0" | | | |
| VUL-48-06 | 48" | 6'0" | 14'0" | | | |
| VUL-48-8.5 | 48" | 8'6" | 16'6" | | | |
| VUL-48-10 | 48" | 10'0" | 18'0" | | | |

VULCAN II SERIES MODULAR GAS CONVEYOR DRYERS

| MODEL | BELT WIDTH | HEAT CHAMBER | OVERALL LENGTH | STANDARD INFEED/OUTFEED LENGTH | ELECTRICAL REQUIREMENTS | MAXIMUM BURNER CAPACITY |
|-----------------|------------|--------------|----------------|--------------------------------|--|-------------------------|
| VUL-II-48-10 | 48" | 10'0" | 20'0" | 10' | 1 Phase, 208-230V, 3.57 kW, 18A, 50/60 Hz 3 Phase, 208-230V, 3.57 kW, 10A, 50/60 Hz | 280,000 BTU |
| VUL-II-48-12 | 48" | 12'0" | 22'0" | | 1 Phase, 208-230V, 3.57 kW, 18A, 50/60 Hz 3 Phase, 208-230V, 3.57 kW, 10A, 50/60 Hz | 280,000 BTU |
| VUL-II-48-16 | 48" | 16'0" | 26'0" | | 1 Phase, 208-230V, 3.57 kW, 18A, 50/60 Hz 3 Phase, 208-230V, 3.57 kW, 10A, 50/60 Hz | 280,000 BTU |
| VUL-II-48-20-HO | 48" | 20'0" | 30'0" | | 1 Phase, 208-230V, 6.81 kW, 33A, 50/60 Hz 3 Phase, 208-230V, 6.81 kW, 19A, 50/60 Hz | 2 @ 280,000 BTU |
| VUL-II-60-10 | 60" | 10'0" | 20'0" | | 1 Phase, 208-230V, 3.57 kW, 18A, 50/60 Hz 3 Phase, 208-230V, 3.57 kW, 10A, 50/60 Hz | 390,000 BTU |
| VUL-II-60-12 | 60" | 12'0" | 22'0" | | 1 Phase, 208-230V, 3.57 kW, 18A, 50/60 Hz 3 Phase, 208-230V, 3.57 kW, 10A, 50/60 Hz | 390,000 BTU |
| VUL-II-60-16 | 60" | 16'0" | 26'0" | | 1 Phase, 208-230V, 3.57 kW, 18A, 50/60 Hz 3 Phase, 208-230V, 3.57 kW, 10A, 50/60 Hz | 390,000 BTU |
| VUL-II-60-20-HO | 60" | 20'0" | 30'0" | | 1 Phase, 208-230V, 6.81 kW, 33A, 50/60 Hz 3 Phase, 208-230V, 6.81 kW, 19A, 50/60 Hz | 2 @ 390,000 BTU |
| VUL-II-72-10 | 72" | 10'0" | 20'0" | | 1 Phase, 208-230V, 3.57 kW, 18A, 50/60 Hz 3 Phase, 208-230V, 3.57 kW, 10A, 50/60 Hz | 390,000 BTU |
| VUL-II-72-12 | 72" | 12'0" | 22'0" | | 1 Phase, 208-230V, 3.57 kW, 18A, 50/60 Hz 3 Phase, 208-230V, 3.57 kW, 10A, 50/60 Hz | 390,000 BTU |
| VUL-II-72-16 | 72" | 16'0" | 26'0" | | 1 Phase, 208-230V, 3.57 kW, 18A, 50/60 Hz 3 Phase, 208-230V, 3.57 kW, 10A, 50/60 Hz | 390,000 BTU |
| VUL-II-72-20-HO | 72" | 20'0" | 30'0" | | 1 Phase, 208-230V, 6.81 kW, 33A, 50/60 Hz 3 Phase, 208-230V, 6.81 kW, 19A, 50/60 Hz | 2 @ 390,000 BTU |

VULCAN

A New Level of Efficiency

Dependable and Versatile

- Cures all ink types with speed and consistency
- Unprecedented reliability
- Reduces gas consumption up to 25% compared to other major brands

Easy to Use

- Intuitive touchscreen operating system features micro-processor with digital control capability
- Save and recall most frequently used settings

Available in over 20 configurations:

- Models available from 36" belt width/6' heat chamber up to 72" belt width/20' heat chamber



STANDARD FEATURES

Design and Construction

- Design provides a consistent and uniform temperature throughout the drying chamber
- Air-cooled cabinet located outside of heat module ensures a long life for all electrical components
- Improved design allows for easy maintenance and lower operating costs

Air Handling

- 14" blower with variable speed controller for improved curing and reduced energy costs
- Optimized airflow with improved spacing of forward-curved blades – exchanges air inside of dryer 8 times every minute
- Double-wall stainless steel filter allows for maximum flow and less maintenance
- Fresh air feed fan

Conveyor System

- Digital belt speed readout
- Large rollers are crowned for better conveyor belt tracking
- Adjustable speed from a few feet up to 37.5 feet per minute
- Optional split belt on models with 48"+ belt widths



Optional split belt



STANDARD FEATURES

Energy Efficiency

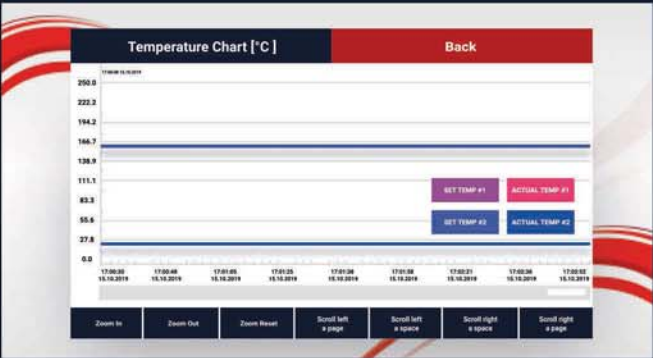
- Heavy-duty thermal insulation prevents heat from migrating into the workplace
- Exhaust dryer with flow adjustment from 300 to 1,000 SCFM, allows for a more energy efficient exhaust control
- Integrated hood eliminates hot air from escaping

Heat Chamber

- Available for natural gas (NG) or liquid propane (LP)
- Double wall construction with galvanized steel interior

Control Center

- Automatic shutdown sequence keeps the blower and belt running until the chamber cools
- Fuzzy-logic digital controller ensures consistency by keeping within 1 degree of target temperature
- A visible and audible warning is activated by an indicator light and buzzer when temperature is not within user-set parameters
- Touchscreen displays key operational information about heat chamber temperature, belt speed and other settings
- Programmable to retain 9 separate job settings
- Program a schedule for the dryer to start up and shut down automatically at specified times on given days of the week
- View temperature plots to track temperature changes in real time



Tracks dryer temperature and substrate temperature in real time



Color touchscreen control center display

Two-Year Limited Warranty

Every effort has been made to ensure the accuracy of the promotional information included in this brochure. Specifications are subject to change. Anatol Equipment Manufacturing Co. and its subsidiaries, if any, expressly disclaim any liability for damages, consequential or incidental, resulting from the purchase, transportation, installation, or use of any products based upon information contained within this brochure. Any rights or remedies are limited solely to those provided in writing by Anatol Equipment Manufacturing Co. at the time of sale.